



永磁同步無齒輪曳引機

Gearless P.M.S.M Traction Machine



誠岱機械廠股份有限公司

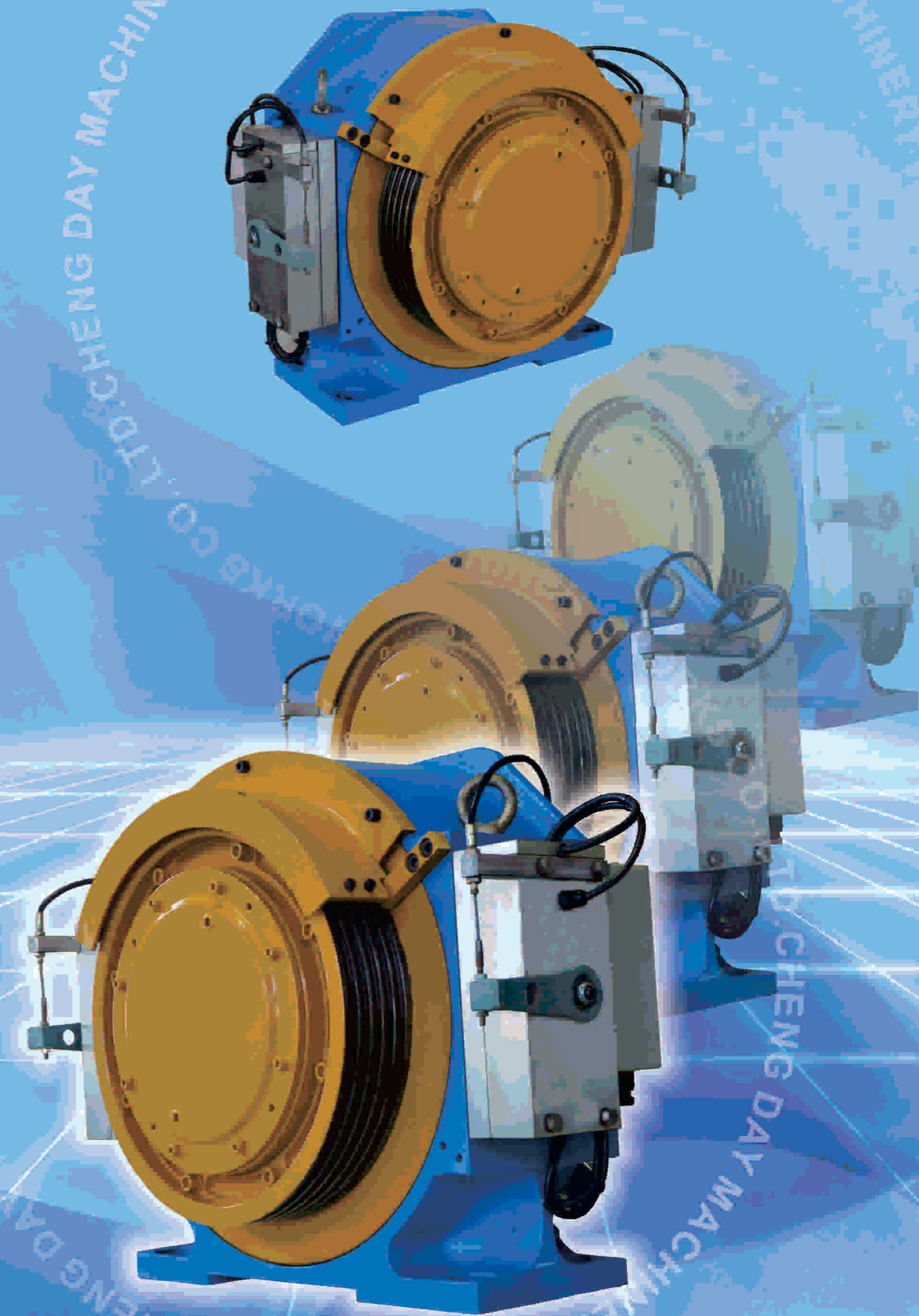
CHENG DAY MACHINERY WORKS CO., LTD.

No. 173, Wen Chiu Road, Dajia District, Taichung City, 437 Taiwan.

Tel: +886-4-2688-1581 Fax: +886-4-2688-1509

Website: www.chengday.com.tw E-mail: info@chengday.com.tw

- 2014年4月初版。 #950277
- 所有規格、尺寸更新時，不另行通知，報價時以實際尺寸為主。
- 由於印刷特性之關係，製品顏色與實物略有差異，請諒察。
- Frist edition of April, 2014 #950277
- No further notice while sizes and dimensions update
Quotations are based on practical dimensions.
- Due to the printing factors, the color of the products is subject to minor deviation from the physical objects.



永磁同步無齒輪曳引機

無齒輪永磁同步曳引機由永磁同步電動機、曳引輪和制動系統組成，通過編碼器實現閉環控制，變頻調速運行。該曳引機相對傳統的產品來說，具有功率因數高、效率高、啟動電流小，啟動轉矩大、運行舒適平穩等優點；採用稀土永磁材料，體積小，重量輕；無齒輪減速，噪音低，可靠性高。

Gearless P.M.S.M Traction Machine

The PMSM Gearless traction machine is assembled by permanent-magnet synchronous motor, traction wheel and brake system through the encoder to achieve closed-loop control and frequency control operation. Compared with the traditional products, the traction machine has high efficiency factor, high efficiency, low starting current is small, large starting torque, smooth running comfort etc.; use of rare earth permanent magnet materials, small size, light weight; no gear, low noise and high reliability.

安全 Safety

舒適 Comfort

極佳低速型，確保乘客感覺更平穩、舒適；我們選擇了國際上最流行的PMSM磁場定向控制，以提高平層精度。

Excellent smooth speed machine ensures that passengers have more fluent and pleasant rides; we designed the most popular PMSM field-oriented control in the world to improve the flat layers accuracy.

電機的噪音小於等於 60dB；
剎車片採用無石棉的摩擦材料，各種
工作狀況下性能穩定。

The motor noise is less or equal to 60dB; apply non-asbestos materials on brake lining, various working conditions and stable performance.

環保 Environment Protection

高效率 High Efficiency 體積小 Small Size 自然冷卻 Natural Cooling

結構說明

- 定子採用冷軋矽鋼片，F級絕緣。
- 永磁體為釹鐵硼稀土永磁材料。
- 冷卻方式為自然冷卻。
- 曳引輪採用QT-700球墨鑄鐵材料。
- 制動系統採用電磁式制動器。
- Apply cold silicon steel stator with F class insulation.
- Apply rare earth element of NdFeB permanent magnetic as the materials of permanent magnet
- Apply a self-alignment roller bearings on driving.
- Cooling by natural cooling.
- Apply QT-700 nodular graphite cast iron material on traction wheel.
- Apply electric disk brake on braking system.

Structure Description

使用條件

按照GB/T 13435-1992"電梯曳引機"標準要求，無齒輪永磁同步曳引機必須在下列工作環境條件下：

- 機房內的空氣溫度應保持在5~40°C之間。
- 環境相對濕度月平均值最高不大於90%，同時該月月平均最低溫度不高於25°C。
- 供電電壓波動與額定值偏差不超過±7%。
- 環境空氣中不含有腐蝕性和易燃性氣體。
- 曳引鋼絲繩表面不得塗上潤滑劑和其他染物。
- 轎廂與對重裝置質量和鋼絲繩在曳引輪上的包角應滿足GB 7588-2003之規定。

Exploitation(make use of) Conditions

In accordance with GB / T 13435-1PPZ "elevator traction machine" standard, the gearless permanent magnet synchronous traction machine shall be working in the following environmental conditions:

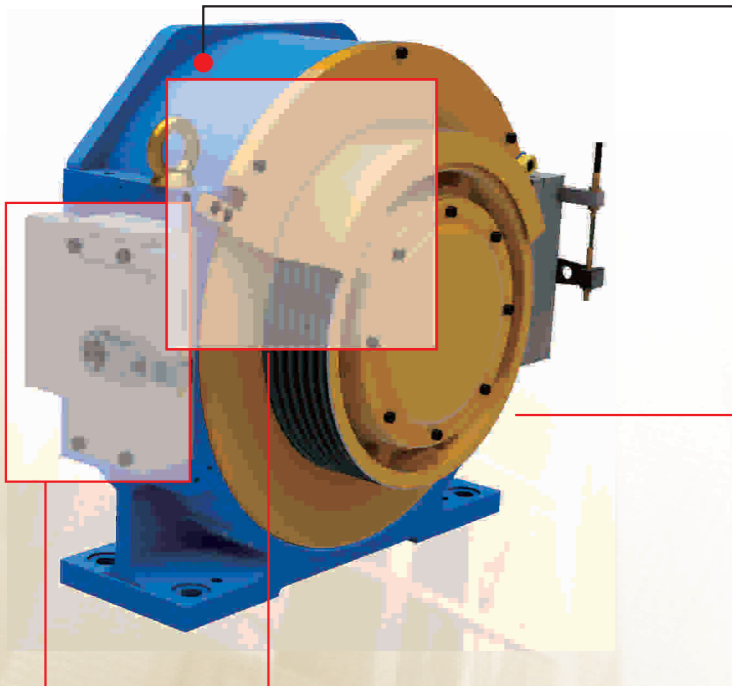
- The indoor temperature between 5 ~ 40°C.
- The highest monthly average of environment relative humidity is less than 90%, while the monthly average minimum temperature is not higher than 25°C.
- No more than ± 7% on supply voltage fluctuations and rating deviation.
- No corrosive and flammable gases on ambient atmosphere.
- Traction rope shall be coated without any lubricants or any surface pollutants.
- The quality of cargo and counterweight and the angle of rope on the traction wheel Shall comply with the regulation of GB / T 7588-2003 (Article 9.3.1b.)

噪音.振動

- 電機噪音 ≤ 60dB
- 振動速度有效值：
振動速度：1mm/s 以下
振動加速度：2m/s 以下
滑輪扭振：4.5mm/s 以下
振幅：20 μm 以下

Noise Vibration

- Electrical Noise ≤ 60dB
- Vibration velocity RMS:
Vibration speed: 1mm / s and below
Vibration acceleration: 2m / s and below
Pulley Torsion Vibration: 4.5mm / s and below
Amplitude: 15μm and below

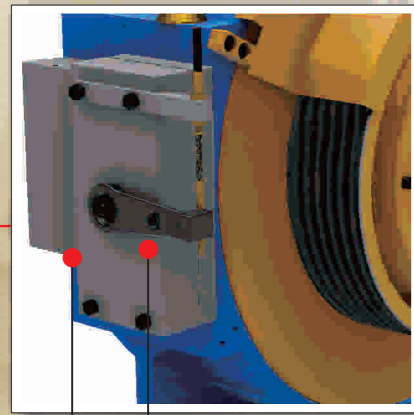


馬達框架

- 材質採用灰口鑄鐵(FC25)鑄造成型。
- 結構強度足夠、吸振性佳、變形量少，增加組配精度及耐用年限。

Motor Housing

- Apply Materials of gray cast iron (FC25) cast molding.
- The motor frame is sufficient strength structure, excellent vibration absorption, less deformation, enhances lifespan with precision and durability.



剎車手動釋放

- 當主機斷電時將剎車適當手動釋放，再配行小齒輪與傳動輪之作動，完成車廂停在最近樓層。

Brake Release

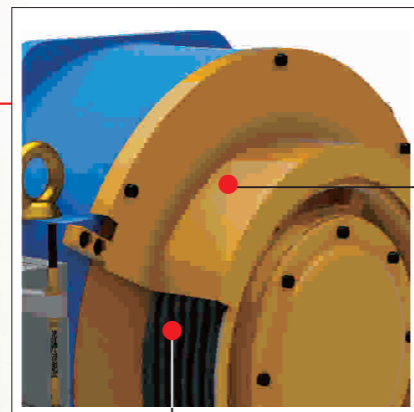
- The manual brake release appropriate releases the break through handle wheel drive pinions to drum gears while power off which could stop car cage smoothly on the nearest floor.

電磁式剎車器

- 作動次數可達百萬次以上。
- 低噪音，60dB以下。

Electromagnetic Brake

- Operation Frequency-1 million times and above.
- Low noise-60dB and below.

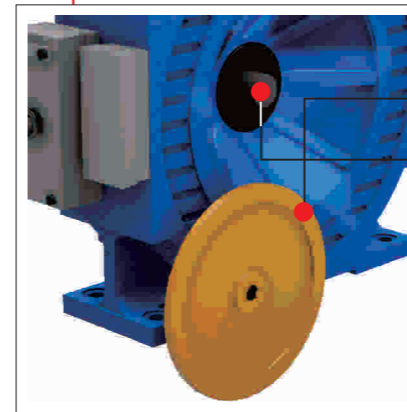


鋼索繩輪

- 材質採用球狀黑鉛鑄鐵(FCD650) 鑄造成型，硬度值達HB220~260。

Wire Rope Wheel

- Apply materials spherical graphite cast iron (FCD650) on wheel with the hardness HB220~260.



安全盤車裝置

- 當主機斷電時，可藉由小齒輪與傳動輪之作動，將車廂安全，平穩停放在最近樓層。

Safety Handle Wheel

- The traction machine is operated through handle wheel drive pinions to drum gears while power off which could stop car cage smoothly on the nearest floor.

編碼器

- 馬達心軸預設留有安裝編碼器界面連接套提供多樣種類選擇。

Encoder

- The encoder installation interfaces on the motor shaft in advance provide various options of traction machine.

安全護蓋

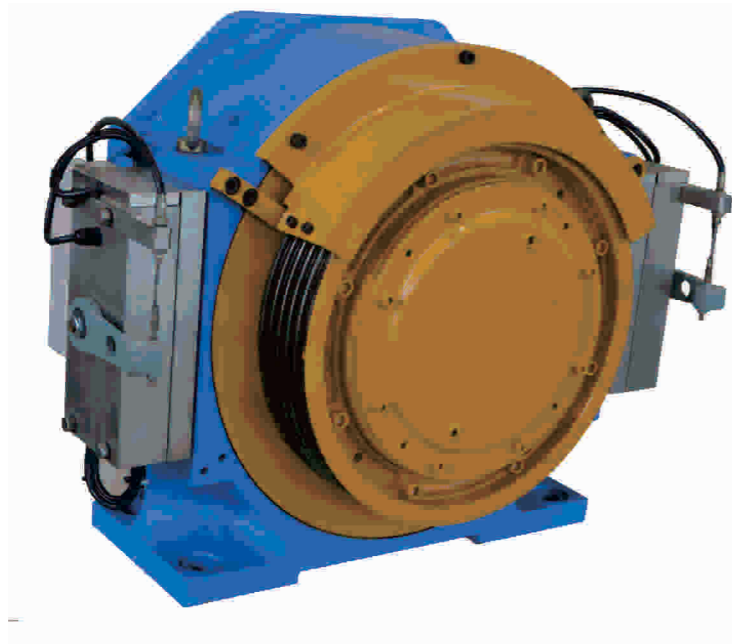
- 防止繩輪運轉時，意外傷害發生之安全保護。

Safety Cover

- The security protection prevents that accident damage occurred during the wire rope operation.

型號說明 Model Description

BB2	-	800	-	200
形式結構 Formal Structure		負載能力 Load Capacity		梯速 Elevator Speed
BB : Black Bear 1 : 外旋轉 External rotation 2 : 內旋轉 Interior rotation		450 : 450kg 630 : 630kg 800 : 800kg 1000 : 1000kg 1150 : 1150kg 1350 : 1350kg 1600 : 1600kg		100 : 1.0 m/s 150 : 1.5 m/s 175 : 1.75 m/s 200 : 2.0 m/s 250 : 2.5 m/s 300 : 3.0 m/s 400 : 4.0 m/s

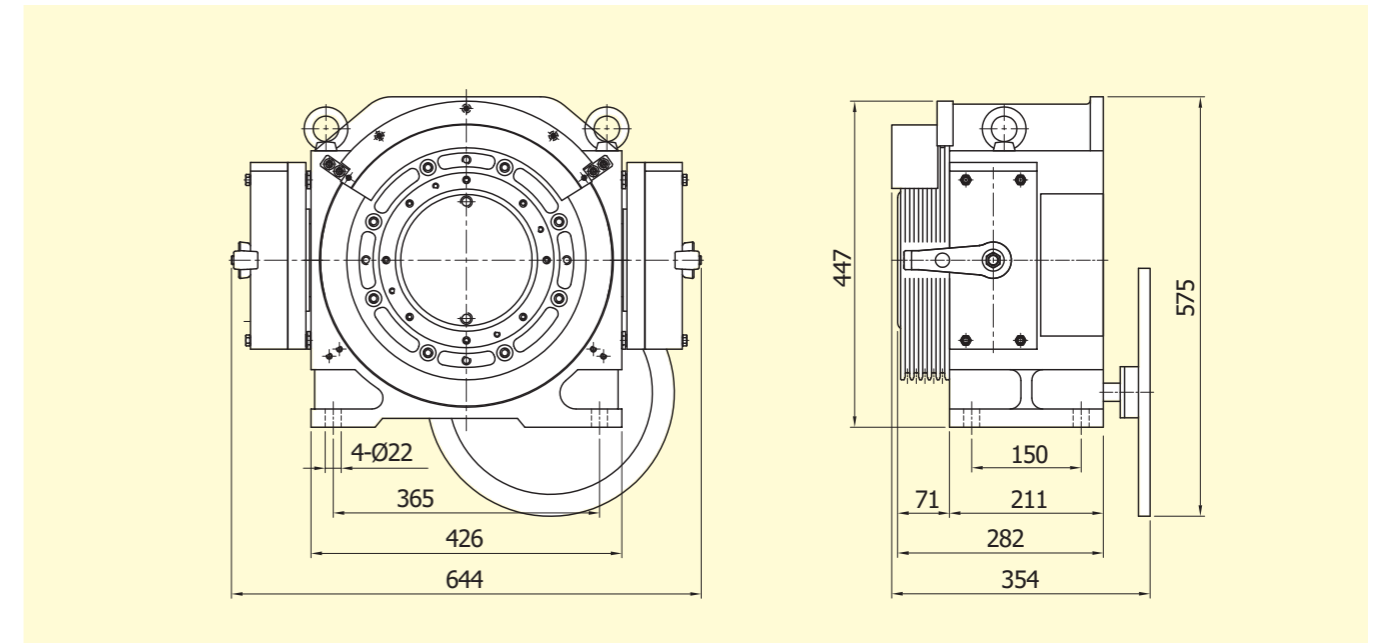


360系列

結構：內轉式
 曳引比：2:1
 制動器電壓：DC110V
 工作制：60% ED
 絕緣等級：F 級
 自重：260 kg

360 Series

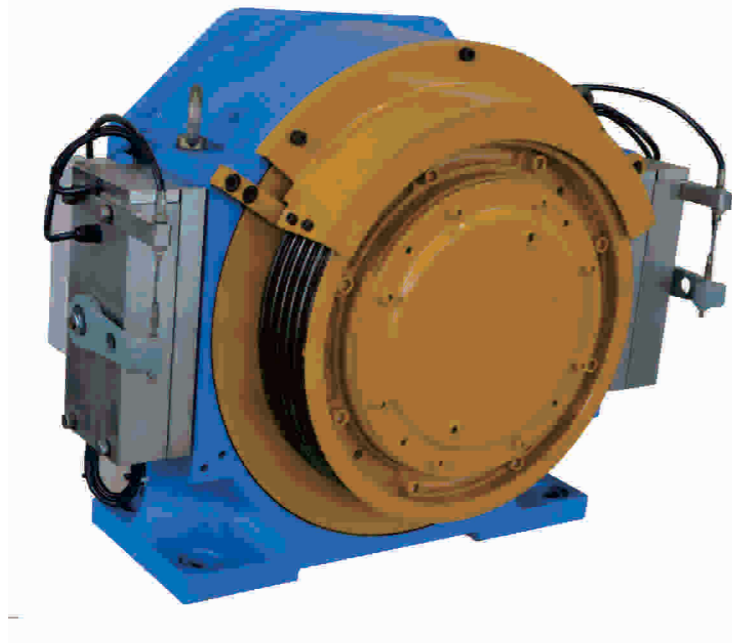
Structure : Internal Rotation
 Suspension : 2:1
 Brake voltage : DC110V
 Operation ED : 60% ED
 Insulation class : F class
 Weight : 260 kg



電機規格及技術數據

型號 Model	載重量 Capacity	梯速 Elevator speed	推薦高度 High	額定功率 Rated power	額定電壓 Rated voltage
	(kg)	(m/s)	(m)	(Kw)	(V)
BB2-450-100	450	1.0	50	3.2	350
BB2-450-150	450	1.5	80	4.8	360
BB2-630-100	630	1.0	50	4.5	360

額定電流 Rated current	額定轉矩 Rated torque	額定轉速 Rated RPM	額定頻率 Frequency load	主軸荷重 Shaft load	曳引輪直徑 Traction wheel diameter	繩槽 Rope groove
(A)	(Nm)	(RPM)	(Hz)	(kg)	(mm)	(mm)
10.0	260	118	31.3	2000	325	4xØ8x12
13.0	260	177	47.0	2000	325	4xØ8x12
13.7	360	118	31.3	2000	325	5xØ8x12

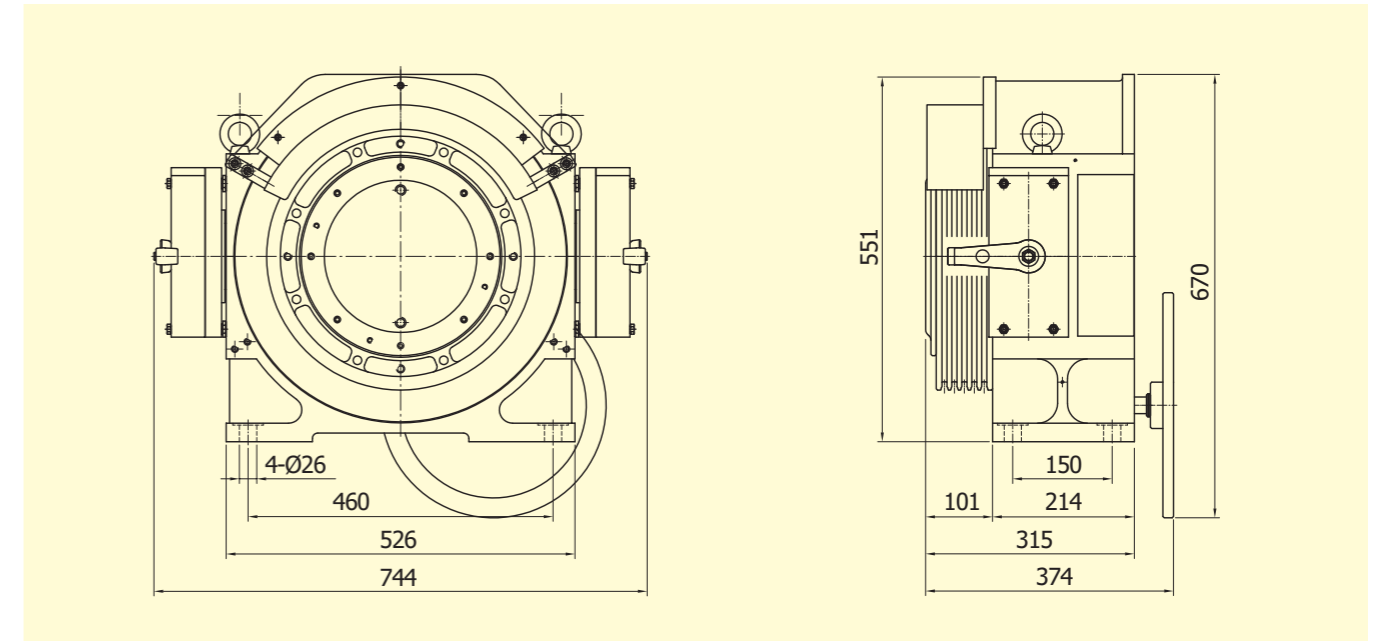


460系列

結構：內轉式
 曳引比：2:1
 制動器電壓：DC110V
 工作制：60% ED
 絕緣等級：F 級
 自重：340 kg

460 Series

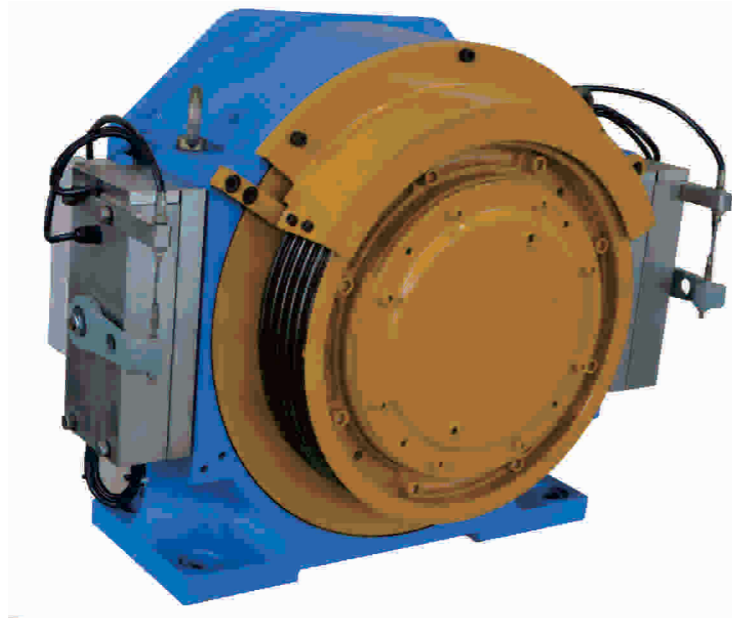
Structure : Internal Rotation
 Suspension : 2:1
 Brake voltage : DC110V
 Operation ED : 60% ED
 Insulation class : F class
 Weight : 340 kg



電機規格及技術數據

型號 Model	載重量 Capacity	梯速 Elevator speed	推薦高度 High	額定功率 Rated power	額定電壓 Rated voltage
	(kg)	(m/s)	(m)	(Kw)	(V)
BB2-630-150	630	1.5	80	6.8	340
BB2-630-175	630	1.75	80	7.9	300
BB2-800-100	800	1.0	50	5.5	340
BB2-800-150	800	1.5	80	8.3	320
BB2-1000-100	1000	1.0	50	6.7	350

額定電流 Rated current	額定轉矩 Rated torque	額定轉速 Rated RPM	額定頻率 Frequency load	主軸荷重 Shaft load	曳引輪直徑 Traction wheel diameter	繩槽 Rope groove
(A)	(Nm)	(RPM)	(Hz)	(kg)	(mm)	(mm)
18.7	450	143	38.2	3000	400	5xØ10x15
24.6	450	167	44.6	3000	400	5xØ10x15
15.5	550	95	25.5	3000	400	5xØ10x15
24.0	550	143	38.2	3000	400	5xØ10x15
21.7	670	95	25.5	3000	400	5xØ10x15

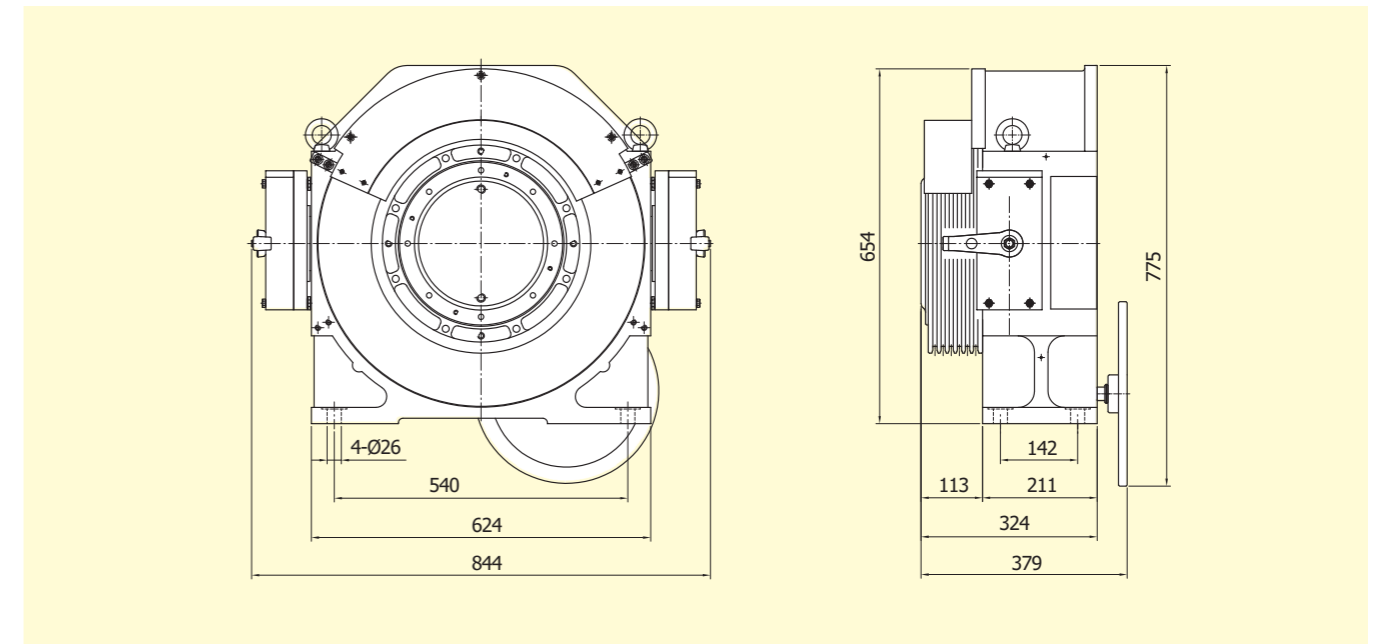


560系列

結構：內轉式
 曳引比：2:1
 制動器電壓：DC110V
 工作制：60% ED
 絕緣等級：F 級
 自重：490 kg

560 Series

Structure : Internal Rotation
 Suspension : 2:1
 Brake voltage : DC110V
 Operation ED : 60% ED
 Insulation class : F class
 Weight : 490 kg



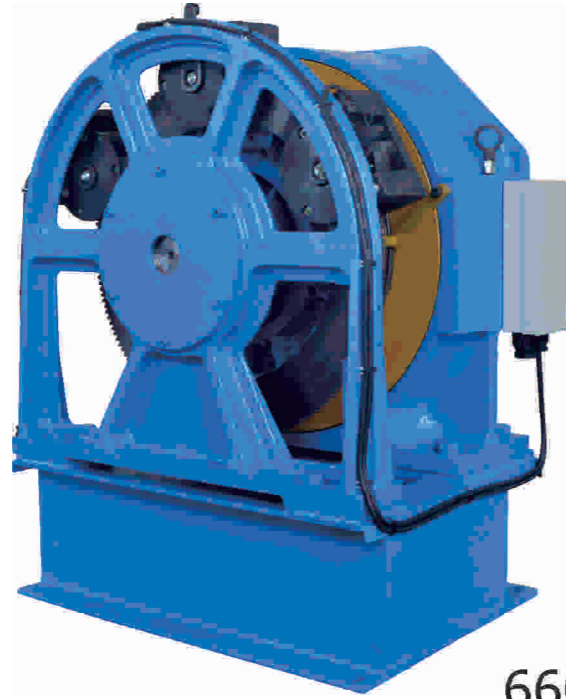
機規格及技術數據

型號 Model	載重量 Capacity	梯速 Elevator speed	推薦高度 High	額定功率 Rated power	額定電壓 Rated voltage
	(kg)	(m/s)	(m)	(Kw)	(V)
BB2-800-175	800	1.75	80	9.7	320
BB2-800-200	800	2.0	80	11.0	360
BB2-1000-150	1000	1.5	80	10.0	310
BB2-1000-175	1000	1.75	80	11.7	360
BB2-1000-200	1000	2.0	80	13.4	360
BB2-1150-100	1150	1.0	80	7.9	360
BB2-1150-150	1150	1.5	80	11.8	360
BB2-1150-175	1150	1.75	80	13.8	360
BB2-1150-200	1150	2.0	80	15.8	360

額定電流 Rated current	額定轉矩 Rated torque	額定轉速 Rated RPM	額定頻率 Frequency load	主軸荷重 Shaft load	曳引輪直徑 Traction wheel diameter	繩槽 Rope groove
(A)	(Nm)	(RPM)	(Hz)	(kg)	(mm)	(mm)
27.1	550	167	44.6	3000	400	5xØ10x15
27.0	550	190	50.9	3000	400	5xØ10x15
30.9	670	143	38.2	3000	400	6xØ10x15
27.5	670	167	44.6	3000	400	6xØ10x15
33.4	670	190	50.9	3000	400	6xØ10x15
17.7	670	112	30.0	3000	340	8xØ8x12
28.4	670	169	44.9	3000	340	8xØ8x12
30.4	670	197	52.4	3000	340	8xØ8x12
35.7	670	225	59.9	3000	340	8xØ8x12

BB2 Gearless P.M.S.M Traction Machine

P_{ermanent} M_{agnet} S_{ynchronous} M_{otor}

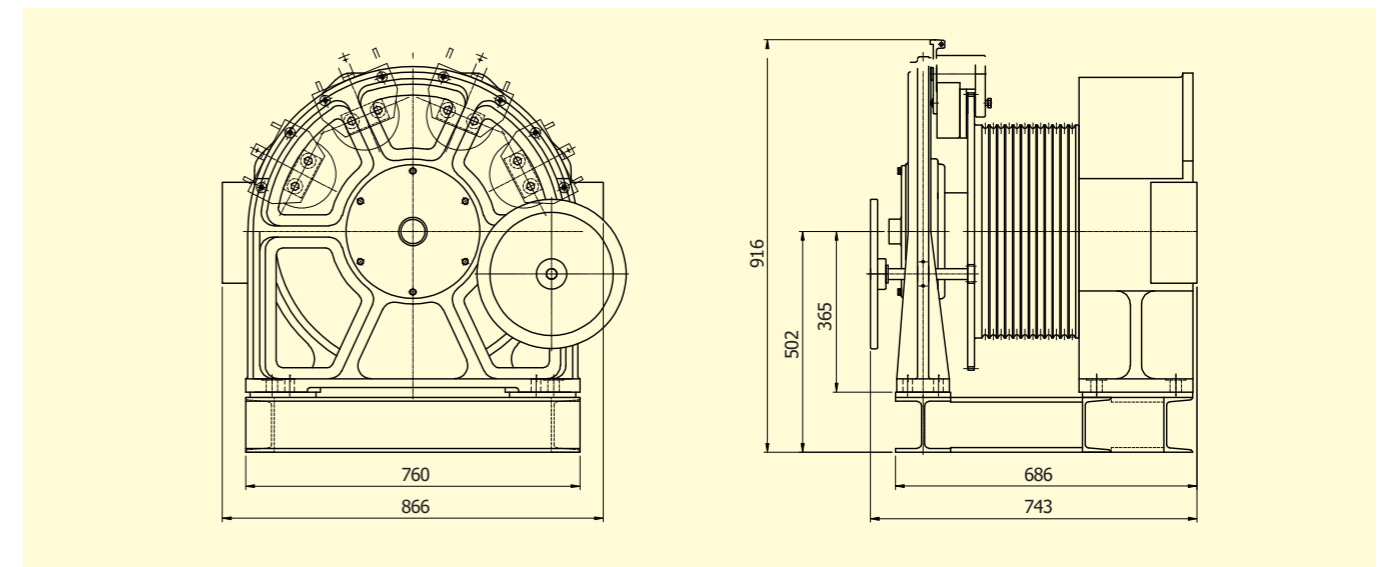
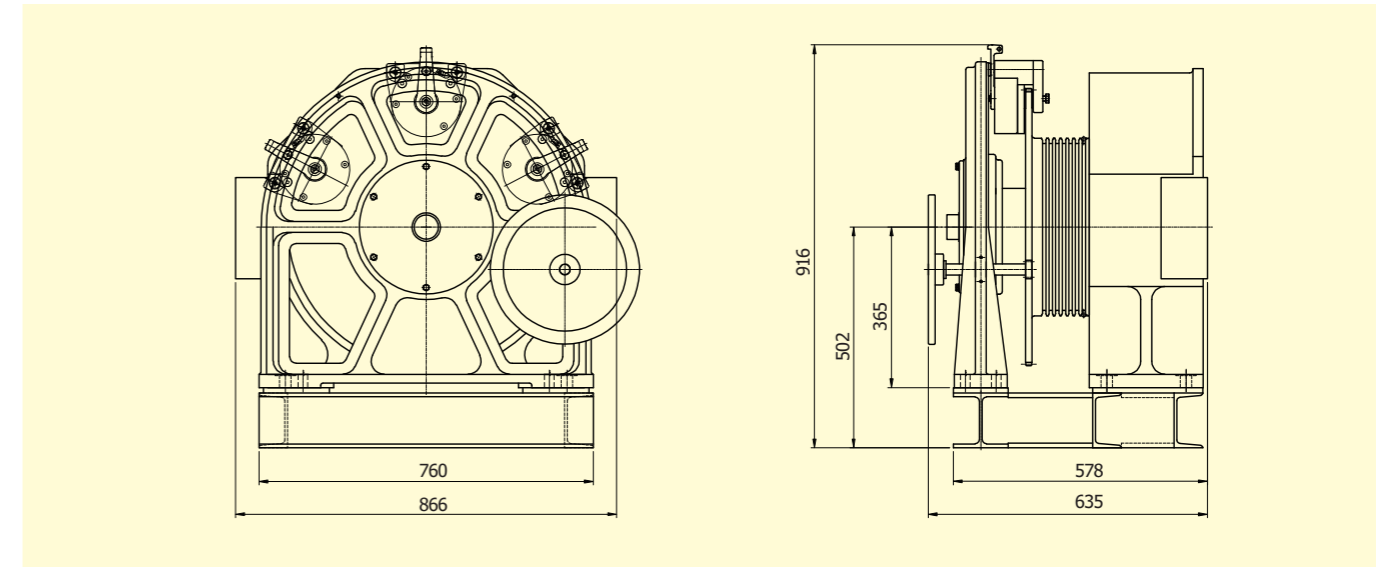


660系列

結構：內轉式
曳引比：2:1
制動器電壓：DC110V
工作制：60% ED
絕緣等級：F 級
自重：990 kg

660 Series

Structure : Internal Rotation
Suspension : 2:1
Brake voltage : DC110V
Operation ED : 60% ED
Insulation class : F class
Weight : 990 kg

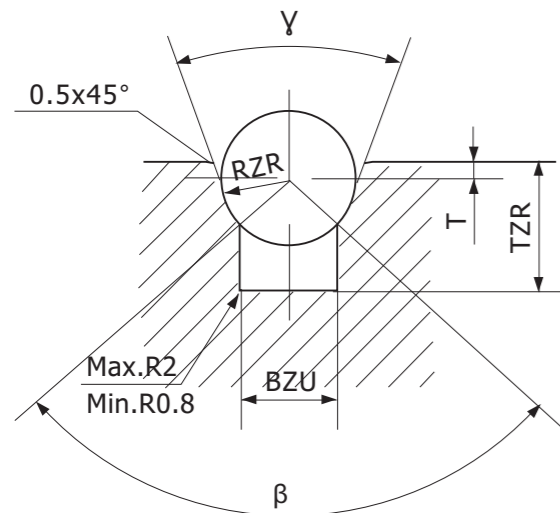


機規格及技術數據

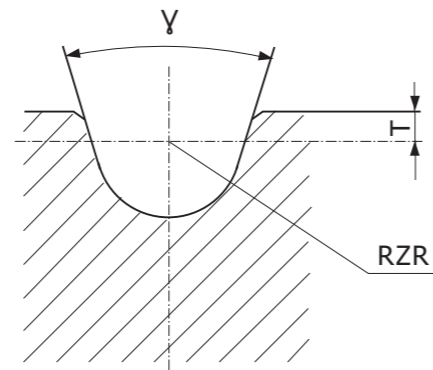
型號 Model	載重量 Capacity	梯速 Elevator speed	推薦高度 High	額定功率 Rated power	額定電壓 Rated voltage
	(kg)	(m/s)	(m)	(Kw)	(V)
BB2-1350-100	1350	1.0	≤50	9.4	360
BB2-1350-150		1.5	≤80	13.9	360
BB2-1350-200		3.0	≤80	18.4	360
BB2-1350-250		2.5	≤120	23.1	360
BB2-1350-300		3.0	≤120	27.7	360
BB2-1350-400		4.0	≤150	36.8	360
BB2-1600-100	1600	1.0	≤50	11.0	360
BB2-1600-150		1.5	≤80	16.5	360
BB2-1600-200		2.0	≤80	22.0	360
BB2-1600-250		2.5	≤120	27.5	360
BB2-1600-300		3.0	≤120	33.0	360
BB2-1600-400		4.0	≤150	44.0	360

額定電流 Rated current	額定轉矩 Rated torque	額定轉速 Rated RPM	額定頻率 Frequency load	主軸荷重 Shaft load	曳引輪直徑 Traction wheel diameter	繩槽 Rope groove
(A)	(Nm)	(RPM)	(Hz)	(kg)	(mm)	(mm)
21.5	1120	80	21.2	4200	480	6xø12x18
32.8	1120	119	31.8	4200	480	6xø12x18
41.6	1120	159	42.4	4200	480	6xø12x18
51.7	1120	199	53.1	4200	480	12xø12x18
60.0	1120	239	63.7	4200	480	12xø12x18
81.0	1120	318	84.9	4200	480	12xø12x18
26.5	1320	80	21.2	5500	480	6xø12x18
40.0	1320	119	31.8	5500	480	6xø12x18
49.8	1320	159	42.4	5500	480	6xø12x18
60.8	1320	199	53.1	5500	480	12xø12x18
72.8	1320	239	63.7	5500	480	12xø12x18
96.3	1320	318	84.9	5500	480	12xø12x18

單繞槽型
Groove of Single Wrap

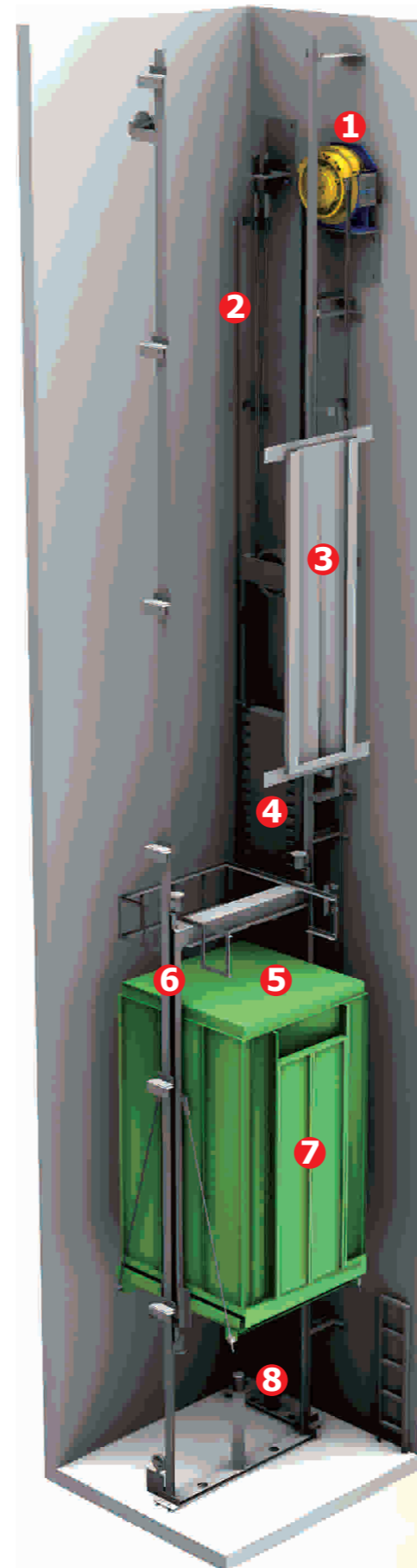


複繞槽型
Groove of Double Wrap



槽型 Groove	繩徑 Rope	β角	γ角	BZU	RZR	TZR	T
單繞 Single Wrap	8	90	30	5.66	4	9.5	1.5
	9.3	90	35	6.56	4.65	12.5	1.5
	10	95	30	7.37	5	12.5	1.5
	11	95	30	8.11	5.5	12.5	1.5
	12	95	30	8.85	6	12.5	1.5
	13	96.5	30	9.70	6.5	12.5	1.5
	14	95	30	10.32	7	15	1.5
複繞 Double Wrap	10	-	35	-	5.2	-	2
	12	-	35	-	6.2	-	2

*樣本數據如有變動,恕不另行通知。
 *推薦使用我司常規槽型,選用應按電梯實際參數計算曳引能力及鋼絲繩安全系數。
 *Data are subject to change without prior notice.
 *This is our factory standard configuration groove.
 *The user should calculate the elevator traction capability and the safety factor of rope according to the actual parameter.



- | | |
|--------------------|----------------------------|
| 1 曳引機 | 1 Traction Machine |
| 2 配重側導軌 | 2 Counterweight Rail Guide |
| 3 乘場門(外側) | 3 Service Door (outside) |
| 4 配重 | 4 Counterweight |
| 5 車廂 | 5 Car Cage |
| 6 車廂側導軌 | 6 Car Rail Guide |
| 7 乘場門(內側) | 7 Car Door (inside) |
| 8 緩衝器
(車廂側及配重側) | 8 Buffer |

/ 安裝環境 /

■ 安裝方式	底腳座安裝型
■ 電源	變頻器輸入電壓
■ 最大額定力矩	200 %
■ 時間負載率	60 %
■ 絕緣等級	F 級
■ 位置	室內
■ 溫度	-10 ~ +40°C
■ 濕度	小於 90 %RH(不結霜)
■ 高度	低於1000m 以下
■ 編碼器	2048 / 8192 P/R(選配)
■ 制動器	雙電磁制動器
■ 曳引比	2 : 1

/ Traction Machine /

■ Installation	: Foot Mount Installation
■ Power Supply	: Input with inverter
■ Maximum rated torque	: 200%
■ Operation ED	: 60% ED
■ Insulation Class	: F Class
■ Location	: Indoor
■ Temperature	: -10 ~ +40°C
■ Humidity	: 90% RH (no frost) and below.
■ Height	: No less than 1000m and below
■ Encoder	: 2048/8192 P/R (optional)
■ Brake	: Dual Electromagnetic Brake
■ Suspension	: 2 : 1